

# EVO3™

MID PEAK - SLIP RATCHET - VENTILATED

EVO3™ IS A TRUE EVOLUTION OF THE LONG ESTABLISHED MK2 & MK3 HELMETS

## TECHNICAL SPECIFICATION

### HEAD PROTECTION

#### INSTRUCTIONS FOR USE

Fit helmet on head and fasten strap to ensure fit

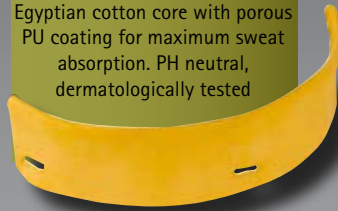
For adequate protection this helmet must be worn with peak facing forward

Ensure the helmet is adjusted to the size of the user's head

**SHELL:**  
High Density Polyethylene (HDPE)

**CHAMLON™ SWEATBAND:**  
Egyptian cotton core with porous PU coating for maximum sweat absorption. PH neutral, dermatologically tested

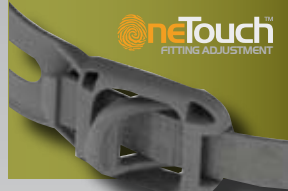
**WEBBING HARNESS:**  
HDPE Strap & Webbing Clips with Polyester Webbing Straps



#### SLIP RATCHET:

One Touch™ Slip Ratchet version of the EVO3™ is so simple to fit that it can be adjusted with just one finger

**oneTouch™**  
FITTING ADJUSTMENT



#### CLEANING & MAINTENANCE

The unit may be cleaned with soap and warm water and dried with a soft cloth

The helmet should not be cleaned with chemical or abrasive cleaners

The helmet should be stored out of direct sunlight

The helmet should be stored away from chemicals and extremes of temperature

#### CONFORMITY

Conforms to EN397, N50365 & ANSI Z89

EN 50365 for Helmets for use in low voltage installations

EC Certificate Number 0279, issued by BSI Product Certification

Meets the retro reflective performance requirements of EN12899 when fitted with CR2 Reflective kit

Meets optional Molten Metal Splash performance

Wide size range. Slip or wheel ratchet - High comfort fit

Available vented or unvented. Available with mid or micro peak

Company personalisation available by printing



MANUFACTURING FOR SAFETY  
WWW.JSP.CO.UK



UKSALES@JSP.CO.UK  
TEL: +44 (0)1993 826050



